

141 2 145 149 4 153 8

fp *mp* *dim.*

165 4.HN.

p *mp*

4.HN. 173 4 HN.

181 189 *f* *mp* *f*

197 205 *dim.* *detached* *p*

213 *fff* As violently and roughly as possible

221

229 *ff* 237 8

245 *p* *cresc. poco a poco* 252 *ff* 7

261 267 *ff*

275 *cresc.*

Richard Strauss
Ein Heldenleben, Op. 40

in F.

1. Horn.

Lebhaft bewegt.

First Horn part of Richard Strauss's 'Ein Heldenleben'. The score is in F major, 4/4 time, and marked 'Lebhaft bewegt.' (Lively movement). It consists of four staves. The first staff begins with a bass clef and a 4/4 time signature, followed by a treble clef. The music features a variety of rhythmic patterns, including eighth and sixteenth notes, and rests. Dynamics include *f* (forte) and *dim. p* (diminuendo piano). There are also triplets and a section marked *sfz* (sforzando).

Dvorak

First part of Dvorak's 'Dances of Bohemia'. The score is in F major, 4/4 time, and marked 'Lebhaft bewegt.' (Lively movement). It consists of four staves. The first staff begins with a treble clef and a 4/4 time signature, followed by a bass clef. The music features a variety of rhythmic patterns, including eighth and sixteenth notes, and rests. Dynamics include *f* (forte), *ff* (fortissimo), *dim.* (diminuendo), and *pp* (pianissimo). There are also triplets and a section marked *18.* (18th measure).

March from *Symphonic Metamorphosis* (Hindemith/Wilson)

Horn in F

$\text{♩} = 88-96$

First staff: *f*

Second staff: *mf*

Third staff: *cresc.* *f*

Fourth staff: *ff*

Fifth staff: *f* *cresc.* *ff*

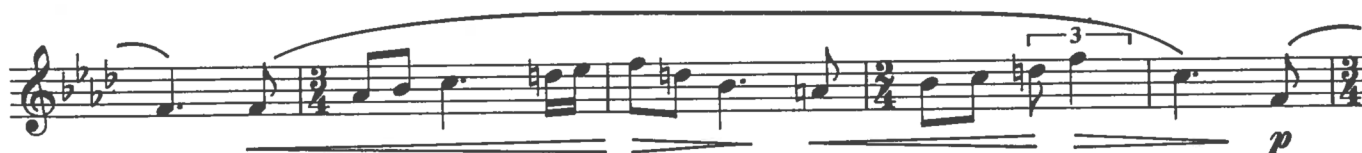
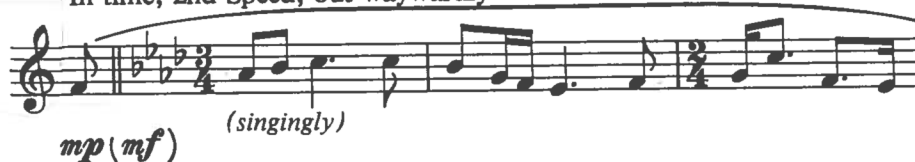
Sixth staff: *L*

Seventh staff: *3*

Detailed description: The musical score is for a Horn in F part, in 2/2 time. It consists of seven staves of music. The first staff begins with a forte (*f*) dynamic. The second staff features a measure marked with a circled 'J' and ends with a mezzo-forte (*mf*) dynamic. The third staff shows a crescendo (*cresc.*) leading to a forte (*f*) dynamic. The fourth staff has a fortissimo (*ff*) dynamic and a measure marked with a circled 'K'. The fifth staff starts with a forte (*f*) dynamic, followed by a crescendo (*cresc.*) and a fortissimo (*ff*) dynamic. The sixth staff contains a measure marked with a circled 'L'. The seventh staff concludes with a triplet of eighth notes marked with a '3'.

"Rufford Park Poachers" from *Lincolnshire Posy* (Grainger ed. Fennell)

(♩ = 80) 68 In time, 2nd Speed, but waywardly



Slow off lots ----- 83 In time, 1st Speed



"LINCOLNSHIRE POSY"

570

Based on English Folksongs gathered in Lincolnshire, England by Lucy E. Broadwood and
Percy Aldridge Grainger and set for Wind Band (Military Band)
by

ST. PETERSBURG COLLEGE BAND

6605 - 5th Avenue North

St. Petersburg, FL 33710

727-341-4360

PERCY ALDRIDGE GRAINGER

1. "LISBON" (Sailor's Song)

Full Score Edition

Assembled by Frederick Fennell

F HORN 1

air
Brisk, with plenty of lilt*

(Stopped)

mf (detached)

The musical score for F Horn 1 of "Lisbon" is written on ten staves. It begins with a treble clef, a key signature of two flats (B-flat and E-flat), and a 6/8 time signature. The first staff includes the tempo/mood instruction "Brisk, with plenty of lilt*" and the performance instruction "(Stopped)". The second staff has a measure rest of 10. The third staff has a measure rest of 18, with the instruction "(Open)" above it. The fourth staff has a measure rest of 26. The fifth staff has a measure rest of 34, with the instruction "2 (Open) 2" above it. The sixth staff has a measure rest of 42, with the instruction "2 2" above it. The seventh staff has a measure rest of 50, with the instruction "3" above it. The eighth staff has a measure rest of 58, with the instruction "2 64 9" above it. The score includes various dynamic markings: *mf* (detached), *f*, *ff*, *pp*, and *mp* (as if from afar). There are also performance instructions such as "louden", "heroicly", and "Separate". The score is marked with several handwritten annotations in blue ink, including "air" at the beginning, "723" above the 50-measure rest, and "Separate" above the 58-measure rest.

*(Which means: beats 1 and 4 much heavier than beats 3 and 6.)

SBS-250

© Copyright 1987 by Frederick Fennell, Assigned 1987 to Ludwig Music Publishing Co., Inc., Cleveland, OH 44110-1999 U.S.A.
© Copyright 1987 by Ludwig Music Publishing Co., Inc. International Copyright Secured. ALL RIGHTS RESERVED
including public performance for profit. Reproduction in any form and duplication by whatever means are strictly denied.

Richard Strauss
Till Eulenspiegel's Merry Pranks
Op. 28

Horn I in F.

Gemächlich. $\text{♩} = \text{♩}_{\text{des}} \frac{4}{8}$ *allmählich lebhafter*

5

p

Volles Zeitmass. (sehr lebhaft)

1

cresc. *mf* *cresc.*

1 8 2 2

ff *sfz*

Mahler

55 *Tempo I. Wie zu Anfang.*

Nicht eilen.

Zurückhaltend. 56 *Schwer.*

p *mf* *ff*

Tchaikovsky

II

Andante cantabile, con alcuna licenza

5 Viol. II Solo
dolce con molto espress.

12 animando - riten. A sostenuto
mf p

17 animando sostenuto
mf > p

22 Con moto animato
p dolce

27 mp 2 2 2 2 sostenuto 4 Tempo I 3 1 2 riten. sostenuto Klar. Poco più animato

Shostakovich

15 8 16 6 17 2 18 19 20 21 6
Allegro non troppo f ff